

Booth Lane
Northampton NN3 3RF
Tel: 01604 734567

Daventry
Badby Road West, Daventry NN11 4HJ
Tel: 01604 736393

Lower Mounts
Northampton NN1 3DE
Tel: 01604 736200

E: enquiries@northamptoncollege.ac.uk

www.northamptoncollege.ac.uk



**YOUR GUIDE TO
FULL-TIME COURSES AND
APPRENTICESHIPS
2021-22**



Changes to the prospectus.
This prospectus was prepared in advance of the academic year to which it relates. Although the College takes reasonable care to provide the courses, services and facilities described, the College cannot guarantee the provision of any course, service or facility. Any course, service or facility may be altered or withdrawn owing to circumstances beyond the College's reasonable control. The information in this prospectus is for general guidance and does not form any part of a contract.

OPEN EVENTS

LET'S TALK ABOUT YOUR FUTURE

Wednesday, 4 November 2020	-	5pm – 7pm
Saturday, 14 November 2020	-	10am - 12.30pm
Tuesday, 9 February 2021	-	5pm - 7.30pm
Saturday, 6 March 2021	-	10am - 12.30pm
Wednesday, 23 June 2021	-	5pm - 7.30pm

Due to COVID-19 it may not be possible to hold an Open Event at our campus, in which case we will host a virtual event.

To find out more call

0300 123 2344



or speak to an advisor using
the online chat feature
on our website.

Register for a ticket online at
northamptoncollege.ac.uk

CONTENTS

▼ Click to navigate through the prospectus

04 WELCOME	29 STUDENT JOURNEY
06 10 REASONS TO JOIN	30 APPRENTICESHIPS
07 ENDEAVOUR AND EXPECTATIONS	32 APPRENTICE PROFILES
08 CAMPUSES & FACILITIES	33 STUDENT PROFILE - MUSIC PRODUCTION
10 DIGITAL ACADEMY	34 HIGHER EDUCATION
12 ACE CENTRE	38 COURSE SUBJECTS
14 FOOTBALL ACADEMY	40 STUDENT PROFILE - BUSINESS
16 STUDENT SUPPORT	43 STAFF PROFILE - CONSTRUCTION
18 COSTS, FEES & FINANCE	45 THE SKILLS CENTRE NC
20 OUR SOCIAL SCENE	50 STAFF PROFILE - GAMES DESIGN
22 STUDENTS' UNION	53 STAFF PROFILE - HEALTH AND SOCIAL CARE
24 STUDY PROGRAMMES	66 EMPLOYMENT & YOUR CAREER
25 STUDENT PROFILE - CONSTRUCTION	67 STUDENT PROFILE - PUBLIC SERVICES
26 COURSES & QUALIFICATIONS	68 OUR FUTURES TEAM
28 QUALIFICATIONS AND PROGRESSION ROUTES	69 HOW TO APPLY



**WE WELCOME EVERYONE
REGARDLESS OF BACKGROUND
OR STARTING POINT AND WE
ARE COMMITTED TO PROMOTING
AND SUPPORTING OPPORTUNITIES
FOR EVERYONE.**

OUR COVID-19 RESPONSE

The COVID-19 pandemic has forced us to rethink everything about the way we operate, from how we manage students' learning to the way we move around the building. It is an enormous logistical challenge and we have painstakingly gone through absolutely everything to ensure we have a COVID-secure campus.

No stone has been left unturned in our mission to make our students safe and we are confident we now have a 'best in class' solution that will provide reassurance for students, parents and staff alike.

The college is likely to feature a 'blended learning' programme for some time to come, combining classroom-based study and working from home. This will allow the college to limit the number of students on campus at any one time and enable enhanced adherence to the social distancing measures in place.

The photographs in this prospectus were taken before lockdown and are not representative of the strict social distancing measures we now have in place. For the foreseeable future, students will face daily temperature checks and a raft of 'best in class' safety measures introduced to combat the threat of COVID-19.

For more information, please visit WWW.NORTHAMPTONCOLLEGE.AC.UK/CORONAVIRUS



A WARM WELCOME FROM THE PRINCIPAL

96%

OF OUR STUDENTS PASSED
THEIR QUALIFICATIONS

94%

OF OUR STUDENTS WENT
ON TO FURTHER STUDY
OR EMPLOYMENT

Life is a journey. As part of that journey we have to make choices. The decision of how best to continue your education is one of the most important choices you will make and I am delighted you are considering Northampton College for your next destination. We look forward to sharing our first-class teaching and facilities with you and invite you to join us on our 'Journey to Outstanding'.

Here at Northampton College, we put our students at the heart of everything we do. Our study programmes are designed around you, providing you with the skills you need to succeed in life, helping you to progress in your chosen career or move on to higher education.

Study programmes may include your main qualification, English and maths plus work experience and employability skills.

WE PUT OUR STUDENTS AT THE HEART OF EVERYTHING WE DO.

Education is compulsory up to the age of 18. At Northampton College we have developed a host of exciting options, including full-time study and Apprenticeships, that will engage you, inspire you and challenge you.

We welcome students of all abilities and we are committed to helping you discover the best possible study programme for you. There is no 'one size fits all' approach here – everything is done with you in mind. We have a wide range of courses on offer at many different levels, so whatever your starting point we can help you find the best route to take on your journey.

Many of you will be true innovators, visionaries, pioneers. You are the employers of the future. By coming to Northampton College you will be curious, you will learn and, ultimately, you will make a difference.

Our teachers and support staff are highly qualified specialists who will support you during your time with us. They will help you gain the best possible grade in your qualification but they will also do everything in their power to help you reach your potential.

Northampton College is for you if you are:

- ▶ Leaving school and seeking further study or an Apprenticeship
- ▶ Looking for professional and technical qualifications
- ▶ Seeking to improve your English, maths or computer skills
- ▶ Wishing to learn English or improve your language skills
- ▶ Wanting to retrain and change career or gain a promotion
- ▶ Returning to education after a gap
- ▶ Looking for higher education options in a college setting
- ▶ Seeking the next course to help you progress.

At Northampton College our primary objective is to help you progress, whether it be to the next level in your education or into your chosen career.

With our support, thousands of students have reached their potential and we can't wait to see what we can do for you.

If you would like to find out more about the College, read on.

I look forward to seeing you soon.



Pat Brennan-Barrett, Principal

TEN REASONS TO JOIN NORTHAMPTON COLLEGE

10



ENDEAVOUR & EXPECTATIONS

01

Success - We get the results: 96% of our students pass their qualifications and 94% went on to further study or employment.

02

Innovative courses – designed to give you the best start in your chosen career.

03

High quality teaching - Our highly qualified teaching staff have lots of industry experience, so you can learn the skills employers need.

04

Improve your grades - Maths and English are essential for your future. If you want or need to retake these must-have qualifications, our teachers will work with you to improve your skills.

05

Top class facilities - We have the latest technology, well-equipped learning resources and award-winning library facilities.

06

Support is always on hand - Our Student Services team is here to help you with any issues, academic, personal, or financial.

07

Enjoy enrichment - You will love our Enrichment Programme designed to support you in accessing a range of additional activities outside of the classroom.

08

Be work ready - We have excellent links with local businesses and connect with them to ensure you get valuable work placements.

09

Help with your future plans - Our Futures team is here to support students with plans for their future, whether you want help with study options, progression routes or career choices.

10

Safe and welcoming - Your personal development, behaviour and welfare is our priority and we welcome students whatever your needs, background or experience.

When you join a college programme, you will start a journey towards fulfilling your aspirations.

Our teachers are trained to spot the potential in every student and they work tirelessly to encourage and inspire you so that you can shine. We have high expectations of all our students and will support you to achieve the highest grades possible on your Study Programme or Apprenticeship.

Not only will you be set challenging targets but you will be stretched to the best of your ability throughout your time in college.

We will provide you with opportunities to take on extra studies, to develop your knowledge and understanding as broadly as possible, and to gain new skills that will help your future career development. Good employability skills will be key to your future success.

YOUR ACHIEVEMENT DEPENDS ON THE EFFORT YOU PUT IN TO YOUR STUDIES. WE ENCOURAGE AND SUPPORT PERSONAL ENDEAVOUR AND COMMITMENT SO THAT YOU CAN GET THE MOST FROM YOUR TIME WITH US.

As part of your commitment, we expect you to attend all of your lessons punctually, and we always follow up absences. We find that students who attend their classes 100% of the time achieve higher grades and enjoy better future career prospects.

We look forward to working with you to achieve your potential.

CREATING POSSIBILITIES, ACHIEVING POTENTIAL.

CAMPUSES & FACILITIES

The environment in which you learn is vitally important so at Northampton College we have the latest technology, well-equipped learning resources and award-winning library facilities.

BOOTH LANE

This is our largest campus, a state-of-the-art building with the very best facilities and resources.

At the heart of the campus is a circular-shaped library with separate study areas, computer suites, professional theatre spaces and an open-air amphitheatre for outside productions and live performances. We also have top class facilities for media, art and design, including our brand new Digital Academy - please see page 10 for details.

Our hi-tech electrical and mechanical engineering workshops and computer-aided design suites are complemented by dedicated science labs and our Advanced Construction Engineering (ACE) Centre - please see page 12 for more information.

Our well-equipped gym and full-sized sports hall can accommodate many court-based sports, including cricket nets for indoor practice. Outdoor facilities include an astro-turf pitch and Multi-Use Games Area.

LOWER MOUNTS

This campus is home to The Salon NC, our professional hairdressing and beauty therapy salons and studios.

These are run by our hairdressing and beauty therapy students as part of their study programmes offering everything from haircuts and colours to facials and massages to members of the public.

We have a spacious café so you won't need to travel far to keep refreshed and our well-stocked library has hundreds of learning resources.

Our Skills Centre is also based at Lower Mounts. We run part-time courses for anyone looking to improve their job prospects or get back in to education.

Lower Mounts Campus



DAVENTRY

We have built a state-of-the-art campus so that young people no longer need to leave Daventry to access high quality further education.

The first floor of our environmentally-friendly campus is home to multiple ICT suites. Here you will also find award-winning library facilities, a science laboratory and art studios, including kilns.

The ground floor is dedicated to a range of other technical and professional learning opportunities. Facilities include motor vehicle workshops, hairdressing and beauty therapy salons and a fully-equipped construction workshop.

Also on the ground floor is the cafeteria, student support and enrolment centre and a Supported Learning area for students with learning difficulties and/or disabilities. On the top floor are our general purpose classrooms for healthcare students and a childcare craft area.

This campus provides places for 400 students, including Apprenticeships, and focuses on developing the skills identified as central to the local economy. An exciting new curriculum has been developed for young people, adults and local businesses.

Daventry Campus



Booth Lane Campus



INTRODUCING OUR NEW DIGITAL ACADEMY

.....
Our new Digital Academy at Booth Lane is due to open in September 2021. This facility aims to train the next generation of digital experts and will teach cutting-edge techniques and skills to equip the workforce of the future.
.....

Students will have access to an exciting, new learning environment including an eSports arena, TV studio, digital workshops, Mac suite and digital design studios plus a whole range of specialist facilities and equipment.

The Digital Academy will offer a wide range of courses, allowing individuals to explore digital career opportunities and progress to Higher Education, Apprenticeships and a range of job opportunities.

The pathways we offer lead to 'in demand' digital jobs in software development, cybersecurity, digital marketing and gaming.

The Digital Academy will provide students with training from digital experts and we will be working closely with local employers from the creative and digital sector to help them gain the skills and knowledge required to thrive in this fast-paced industry.



THERE IS SIGNIFICANT DEMAND FOR DIGITAL SKILLS IN THE WORKPLACE, PARTICULARLY IN PROGRAMMING AND CODING, SO DIGITAL ACADEMY STUDENTS WILL HAVE ACCESS TO EXCELLENT EMPLOYMENT OPPORTUNITIES.



ADVANCED CONSTRUCTION ENGINEERING (ACE) CENTRE

THE ACE CENTRE, PROVIDES TRAINING OPPORTUNITIES FOR STUDENTS ON FULL-TIME STUDY PROGRAMMES AND APPRENTICESHIPS.



The ACE Centre is here to train the next generation of construction professionals, including bricklayers, plumbers, electricians, decorators and carpenters.

The state-of-the-art facility includes a variety of digital learning opportunities, including virtual reality and industry-standard workshop equipment.

There is a focus on developing the skills needed for the most up to date construction and engineering technologies, with the Centre tackling the severe skills shortages threatening to hit the construction industry in Northamptonshire and beyond.

Alongside courses which focus on craft skills there are also courses at Level 3 for those looking for supervisory, technician or management careers in the sector, such as in Civil Engineering, Building Services Engineering, or Project Management. We also offer progression routes at Level 4 and 5 for technician, supervisory and management roles in Construction Engineering.

Students can choose to take a multi-skills programme, including bricklaying, plumbing, carpentry, decorating and electrical installations, which means you can try a number of trades before deciding where to specialise.

The Centre aims to produce a pipeline of 'work-ready' staff for local employers, with companies including Kier, Balfour Beatty, ENGIE, Bowmer & Kirkland, Metcalfe and many more industry-based partners.

ADDRESSING BOTH THE SKILLS GAP AND AGEING WORKFORCE IS A TOP PRIORITY FOR LEADING CONSTRUCTION COMPANIES.

"It's incredibly important that young people learn construction skills. The industry faces significant skills and employment challenges in the coming years and it's essential that young people are given the opportunity to learn trade, technical and professional skills to support the future of the construction industry."

Paul Skitt - Skills Development Director, Flannery Plant Hire





**WIN TOGETHER.
LOSE TOGETHER.
LEARN TOGETHER.**

ACHIEVE YOUR GOALS WITH OUR FOOTBALL ACADEMY



Eddie McGoldrick, Head Coach



Students with an ambition to train as professionals within the sports sector can now combine sport with a full-time college course.

We have teamed up with the Foundation Academy of Premier League Crystal Palace Football Club to deliver football training at our Booth Lane campus for students aged 16-18.

This programme is being led by former Crystal Palace, Northampton Town, Manchester City and Arsenal player, Eddie McGoldrick, who also played for the Republic of Ireland on the international stage.

HOW MUCH FOOTBALL COACHING IS INCLUDED?

There will be two hours of football coaching each day, alongside strength and conditioning training and individual programmes, led by UEFA-licensed coaches. Students will train once a day, and coaching sessions will be based on five modules - technical, tactical, physical, nutritional and psychological.

Students will also have the chance to play in the National Football Youth League with Premier League clubs including Chelsea, Tottenham Hotspur, West Ham United, Liverpool, Everton and Newcastle United.

All games will be recorded with state-of-the-art camera equipment from Veo Technologies. This will provide players with match analysis feedback to improve their performance.

WHAT PROGRAMME OF STUDY COULD I FOLLOW?

Football coaching is combined with a BTEC Level 2 or 3 in Sport, enabling students to study while they play, and secure qualifications that could lead to higher education or an Apprenticeship. The study programme will include employability skills and work experience as well as maths and English qualifications, for those that need them.

See page 24

HOW MANY PLACES ARE AVAILABLE AT THE FOOTBALL ACADEMY?

The Academy has places for around 80 students, both male and female. The Foundation Academy is actively looking for girls to join the programme and participate in the National Football Youth League (NFYL).

WHAT COULD I DO NEXT?

Students will be able to progress to higher education or on to an Apprenticeship (for those who prefer to enter employment and earn while they learn). Any players who excel at the Football Academy will also have the opportunity to try out for Crystal Palace's main youth academy in South East London. Former Academy students have had trials with several non-league, semi-professional and professional football clubs and have won scholarships to colleges in the USA.

DOES THE FOOTBALL ACADEMY ACCEPT FEMALE STUDENTS?

The Academy is always looking for talented footballers to join the course and will accept applications from both male and female applicants.



STUDENT SUPPORT

HERE AT NORTHAMPTON COLLEGE WE ARE COMMITTED TO PROVIDING SUPPORT FOR OUR STUDENTS WHENEVER THEY NEED IT.

PERSONAL TUTORS AND ACADEMIC COACHES

You will be allocated a personal tutor/academic coach as soon as you start your studies, ensuring you always have someone to turn to for advice, help or support with your Study Programme. Together with your tutor/academic coach, you will agree your targets and destination. This means you will be able to discuss your personal learning targets, talk about your progress and record your achievements.

PERSONAL SUPPORT

Our team of personal support staff can help you with any issues that affect your time at college whether they are personal or linked to your college work. Staff are available to offer one to one sessions at all our campuses where you can discuss any problems or concerns you might have.

Call in to Student Services to find out more.

LINKS WITH PARENTS/GUARDIANS

If you're a parent or guardian, rest assured that we will keep in touch if your son or daughter is aged under 19 so you're informed about their progress and attendance. You will be sent a written report at least twice a year and invited to attend a parents' evening. You are welcome to contact the Curriculum Manager if you have any concerns.

ENGLISH AND MATHS

These subjects form a compulsory part of the Study Programme for students aged 16-18. Any student who has not yet achieved a grade 4 (C) or above will be required to continue studying for a maths and English qualification. Students who have achieved a grade 4 (C) and wish to improve their grade will be given the opportunity to do this. Our maths and English labs are designed to support students with improving their skills. The labs are a great place to focus on revision, they offer a relaxed learning environment and drop-in sessions and appointments are available. Staff will be on-hand to answer any questions you may have.

SAFEGUARDING

We take safeguarding the welfare of children and vulnerable adults seriously, helping to prevent abuse. Our Safeguarding Policy can be found on our website.

BRITISH VALUES

We prepare our students for life in modern Britain by promoting values that support a strong sense of social and moral responsibility and help them to understand:

- Democracy
- The rule of law
- Individual liberty
- Mutual respect and tolerance of those with different faiths and beliefs.

DIVERSITY

We welcome everyone regardless of background or starting point and are committed to promoting and supporting opportunities for everyone in all aspects of college life.

EQUALITY

We promise that nobody will be treated less favourably than others on grounds of race, gender, belief, sexual orientation, age, disability or learning difficulty.

OUR LIBRARIES

Our impressive range of resources and facilities will support you in your studies as well as in your personal and professional development. We have won awards for helping students develop research and study skills so they can learn independently.

GETTING TO COLLEGE

Many students walk to college but we also cater for drivers and cyclists. If you prefer public transport then buses are quick and convenient and all three of our campuses have good links. Wherever you live in the county, one of our campuses is within an easy journey. Our Booth Lane Campus is 10 miles from Wellingborough and 12 miles from Kettering. Our Daventry Campus is less than 12 miles from Rugby. You may be able to get help with the cost of your travel – **just ask the Student Services team for advice.**

CHILDCARE

Full and part-time childcare is available at our Booth Lane campus at reasonable costs for children up to school age. Students using our childcare provision may be entitled to financial support towards the cost of childcare and should talk to staff in the Student Services team to find out more about what's available.

FUTURES

We have a careers service called 'Futures' that is here to offer you impartial information, advice and guidance, whether your next step is further study, university, training or employment. Futures staff can help you to plan your progression to higher level qualifications, careers, Apprenticeships and university as well as supporting with student finance applications and CV writing. **To book an appointment with a Futures adviser call our Enrolment Centre on 0300 123 2344.**

LEARNING SUPPORT

The College has developed its support for students over successive years, endorsed by an Ofsted rating of 'Outstanding' in this area. All our students are well supported, whatever your individual needs. We are committed to ensuring that students with additional needs, learning difficulties or disabilities, e.g. dyslexia, dyspraxia, sensory or physical difficulties are given the support they need to succeed.

Students who did not achieve a grade 4 in maths and English will benefit from a wraparound support programme which is included on their timetable. To find out more or to discuss your needs with the team, please call the **Additional Support Team** on **01604 734184.**



HELEN JANSKA ADDITIONAL LEARNING SUPPORT

Additional Support at college is staffed by a dedicated team of multi-disciplinary specialists who support students with a range of differing abilities and conditions to access learning and achieve their goals.

"We support students with additional needs, learning difficulties or disabilities, e.g. autism, dyslexia, AD(H)D, mental health conditions, hearing impairment, visual impairment and physical and medical conditions. We are a person-centred team and focus on finding the right level of support for each individual student."



COSTS, FEES & FINANCE

If you are under 19 when you start your full-time Study Programme you won't pay any tuition, examination or registration costs – apart from late fees, re-sit entries, unsupported entries and unauthorised exam absences.

If you are aged 19 to 23 and starting a full-time Study Programme you may need to pay a yearly tuition fee and the examination, registration and assessment costs. Some students are entitled to a 100% reduction in tuition fees. Call our Enrolment Centre on 0300 123 2344 to find out if you are eligible.

If you are aged 24 or older and are applying for a Level 3 or 4 programme you will need to pay for all costs associated with your course. You may, however, be eligible for an Advanced Learner Loan to help you pay for all or part of your course. Details will be provided when you attend your interview. Students aged 19+ may be eligible for a loan to cover the cost of some or all of their tuition fees.

BURSARIES

Funding is provided to Northampton College by the Government to support students who would otherwise find it difficult to come to college.

Eligibility is based on age, residency, household income and previous level of qualification, although exceptional circumstances will be considered.

Please visit:

www.northamptoncollege.ac.uk/support-for-students

CHILDCARE COSTS

If you are aged over 20 at the start of your college course and applying to the Student Bursary scheme for help with the cost of childcare you will need to register with one of our approved childcare providers.

If you are aged under 20, you may be eligible for help under the Government's Care to Learn scheme which pays up to £160 per week for childcare with an Ofsted-registered provider while you are at college. You must be in receipt of child benefit for the child or children you are claiming for.

HIGHER EDUCATION STUDENT LOANS

Full-time or part-time students can apply for a loan to pay for the tuition fees of a Higher National through the Student Loan Company.

LOANS

If you meet the following criteria you will be eligible to apply for an Advanced Learner Loan to fund some Level 3 or Level 4 courses:

- You are between the ages of 19-23 and already have a Level 3 qualification
- You are aged 24 or over

[Advanced Learner Loan](#)

www.gov.uk/advanced-learner-loan

You'll only need to start repaying the loan after you've completed your course and once you are earning more than £26,575 a year. For more information, go to www.gov.uk/government/organisations/student-loans-company.

TOTUM

Download the TOTUM app to access student discounts or upgrade your membership to a paid level and save £££s every day on travel, clothes, entertainment and technology.

www.totum.com

LET US HELP YOU

Contact a member of the Student Services team on **01604 734066**, email financial.support@northamptoncollege.ac.uk or visit our website www.northamptoncollege.ac.uk

OUR SOCIAL SCENE



SOCIABLE AND SUPPORTIVE, FUN AND ENTERPRISING – NORTHAMPTON COLLEGE HAS EVERYTHING YOU COULD WISH FOR WHILE STUDYING WITH US.

EVENTS

Our students are invited to not just attend events, but also to plan them and to choose charitable causes to support.

In recent years, students have organised everything from music gigs and outdoor festivals to dances and celebrations, raising money for causes that have included Children in Need, Sport Relief, Macmillan and many more. Why not create a virtual event or online fundraiser to support a cause you care about?

The Students' Union is here to help you make your event plans a reality, so chat to the team about all your ideas.

SPORTS

Whatever your skill level we have a range of clubs open to all, including archery, badminton, basketball, boxing, cricket, dodgeball, football, rugby, softball, netball, table tennis, tennis, Ultimate Frisbee, martial arts, volleyball, yoga and Zumba.

VENUES

The Underground is our very own music venue, located in the College basement. This is where many of our students go to perform and everyone is welcome to attend regular music gigs, all organised by our students.

Our flagship gig of the year takes place at Northampton's premier music venue The Roadmender, where student performances feature an eclectic mix of music from rock and heavy metal to acoustic sets.

Hang out with friends between lessons in Booth Lane's courtyard - the perfect place to chill out, with its own amphitheatre and green space.

Nearby is The Lookout and Lookout Express, where you can grab a bite to eat, mingle and get to know fellow students from different parts of the College.

And, if you're feeling active, check out our gym – a great place to work out and, best of all, it's completely free.

TRIPS

We organise a range of trips every year as part of our college enrichment programme which means you can have a great day out with friends for a discounted price.

Yearly trips include:

- Alton Towers
- Warner Brothers Studios
- Football stadium tour
- Ice skating
- Thorpe Park

ACTIVITIES

Get involved and make the most of our host of clubs and enrichment activities. To whet your appetite, here are just a few on offer:

- Yoga
- Car maintenance
- X-box
- Singing lessons
- Book club
- Sign language
- First Aid
- Driving theory
- Guitar lessons
- E-Citizenship Programme

(All trips and activities are subject to availability)

LOCATIONS

There is plenty to do both in and around our campuses and our students travel to Northampton College from all over the county – and from as far afield as Towcester, Milton Keynes, Wellingborough, Rugby and Market Harborough.

Our Booth Lane campus is just a short walk away from local amenities including the Weston Favell Shopping Centre and not far from Riverside Retail Park which is home to a range of high street shops and eateries.

Our Lower Mounts campus is a mere two-minute walk from Northampton town centre with all of the shops and restaurants you could need.

Our Daventry campus is in the heart of the town, a short walk to local shops and restaurants and surrounded by plenty of open space and countryside.

STUDENTS' UNION

The Northampton College Students' Union (NCSU) ensures that students have a voice and that your opinions are heard and acted upon. Your views matter and we want to hear them.

As a college, everything we do is done with the students in mind so it is absolutely essential that we know what works for you and, just as importantly, what doesn't. That way we can work together to develop an enjoyable environment that brings success, time and time again. Your input in this process is crucial, so get involved!



ROLES IN THE STUDENT UNION

The NCSU is made up of two Student Officers; the Student President & Governor and the Student Vice President & Governor. Each role has its own responsibilities and will be supported by the Enrichment Liaison Officer. You will be expected to be a champion for the Students' Union, promoting them in a positive light both within the college and the local community.

We're looking for passionate and hard-working applicants who are fully committed to their roles and willing to undertake new challenges and responsibilities to act on behalf of your fellow students.

Student Services staff will always be on hand to support you but ultimately the students run the Union, therefore you need to be comfortable in leading your peers.

This is your chance to stand up and lead from the front.

WHAT'S IN IT FOR YOU?

Undertaking any NCSU roles will provide you with the opportunity to gain experience and improve your skills in leadership, communication, teamwork, problem solving, motivation and presentation, all of which will help you to secure employment or a place at university.

STUDENT AMBASSADORS

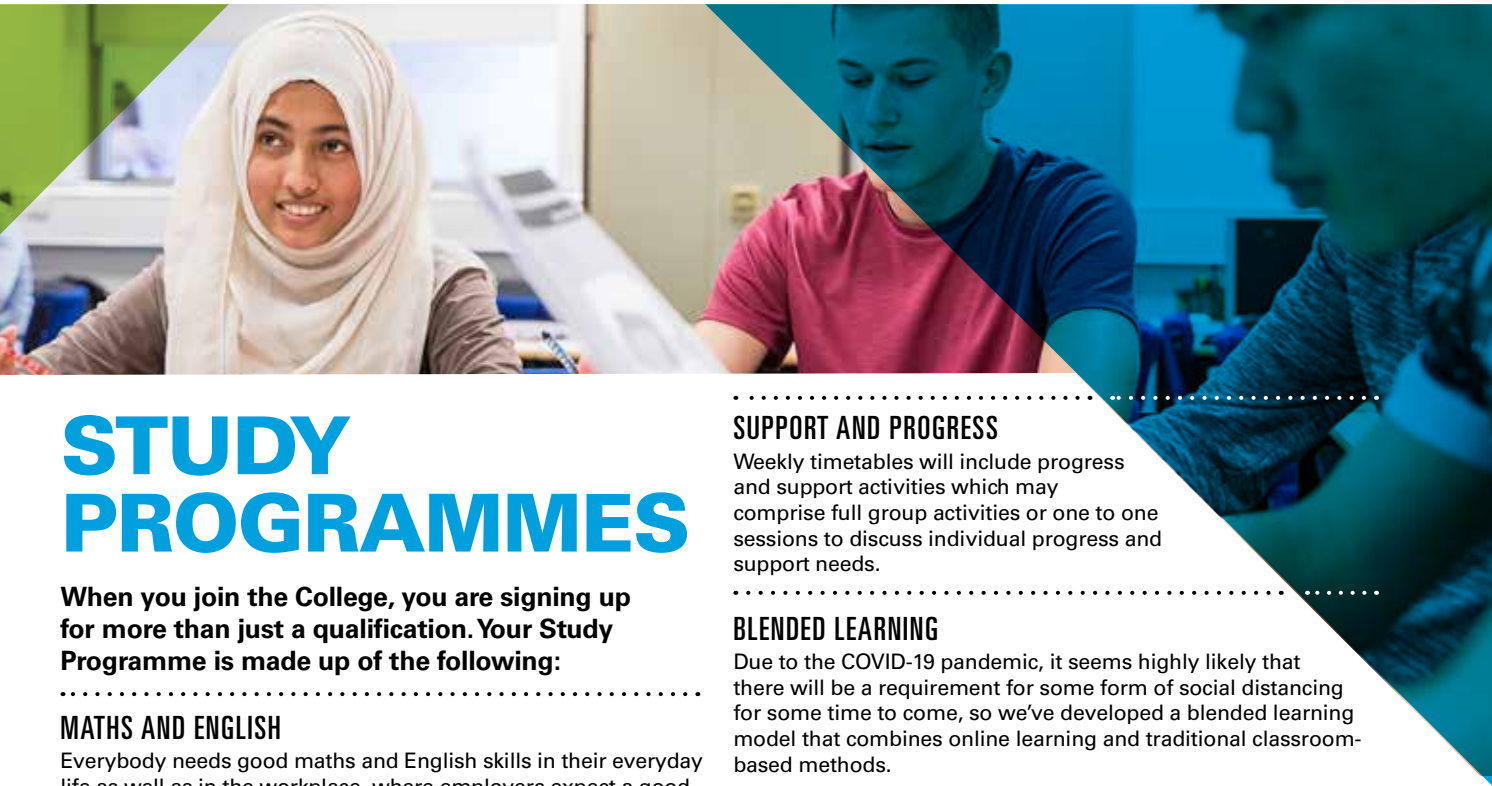
During your time at college you will also have the chance to become a Student Ambassador.

Our Student Ambassadors are a vital part of the college community, helping out at open events and talking to prospective students and their parents about what life is like at Northampton College.

Ambassadors also take part in focus groups where they can help shape the decision-making process across college. You will welcome visitors to campus and assist the Student Union with charity events. It's the perfect way to contribute to college life.

As a Student Ambassador, you will be offered rewards after taking part in three of the above activities. The more you take part, the more you will be rewarded.





STUDY PROGRAMMES

When you join the College, you are signing up for more than just a qualification. Your Study Programme is made up of the following:

MATHS AND ENGLISH

Everybody needs good maths and English skills in their everyday life as well as in the workplace, where employers expect a good standard in both before they will offer you a job. All students will continue to improve their maths and English and if you don't have a grade 4 (C) at GCSE, we will work with you to help you achieve this.

CORE QUALIFICATION

You have chosen the subject area that you are interested in and we will make sure you are working at the right level and are challenged to achieve the highest level of qualification you can.

WORK EXPERIENCE AND EMPLOYABILITY

When it comes to getting started in the career of your choice and securing the right job, we want our students to stand out from the crowd. You may get the opportunity to take part in work experience placements that will help you adapt to the world of work. You will get involved in sessions that cover cv writing, interview skills, finding employment, time management, money skills, and personal development to build your confidence. You will also get to meet local employers when they come into college as visiting speakers or as part of industry visits to business venues.

SUPPORT AND PROGRESS

Weekly timetables will include progress and support activities which may comprise full group activities or one to one sessions to discuss individual progress and support needs.

BLENDED LEARNING

Due to the COVID-19 pandemic, it seems highly likely that there will be a requirement for some form of social distancing for some time to come, so we've developed a blended learning model that combines online learning and traditional classroom-based methods.

Interactive lessons will be delivered using a variety of digital platforms, and we have brought together a wide-range of online resources to help students to learn at home. This has been done to reduce the number of people in college at any one time.

T LEVELS – COMING SOON

T Levels are a new Level 3 technical qualification – equivalent to three A Levels. They will bring together classroom study with a significant work placement – called an industry placement – to give you the skills and knowledge required to be ready to work in a wide range of sectors and industries.

INDUSTRY PLACEMENTS

Industry placements will form part of the new T Levels courses, which are being implemented at Northampton College from September 2022. They will provide students with a valuable opportunity to develop their practical and technical skills in a role directly relevant to their course. Depending on which course you choose to study, you may have the opportunity to undertake an industry placement or industry placement project in September 2021.



VICTORIA OGUNTOYE

LEVEL 3 CONSTRUCTION

"I've always been interested in engineering and in 2018 I left Nigeria to move to Northampton. I'd heard about Northampton College and chose to join a Level 3 Engineering course.

"I looked at my options and this was the decision which best suited me. I enjoyed everything about the course and particularly enjoyed the practical side. I learnt a lot from the course and the tutors were always nice to me.

"I've always been fascinated with buildings and structures and whilst at the College I was given the opportunity to do some work experience with the Kier Group, who were building a new prison in Wellingborough. This was a great opportunity to put what I had learnt into practice. If you're prepared to work hard the course is very rewarding.

"I have been offered a place on the project management degree course at the University of Leeds, which I have deferred for a year."

COURSES & QUALIFICATIONS

FOUNDATION PROGRAMMES

If you are unsure what you want to do, or need to improve your entry qualifications, our one-year full-time Foundation Programme provides an ideal starting point, enabling you to progress through to further levels of achievement. As well as working on a range of work-related projects you will also study for qualifications in English and maths.

LEVEL 1 QUALIFICATIONS

These introductory qualifications will provide the perfect stepping stone on to BTEC or equivalent qualifications at Level 2 and above.

LEVEL 2 SPECIALIST STUDY PROGRAMME

If you didn't get the GCSE maths and English grades you were hoping for and need a grade 4 (C) or above in English and maths, this course will provide you with an opportunity to progress on to a Level 3 course or Apprenticeship programme. This is a one-year course, designed for students who need to focus solely on an intensive programme of maths and English.

LEVEL 2 AND 3 STUDY PROGRAMMES

These highly regarded qualifications will help you prepare for your next step, whether it is employment or further and higher education.

HIGHER NATIONALS (HNCs & HNDs)

Develop hands-on professional and technical skills to help you realise your ambition, whether you want to progress on to university to gain a degree or equip yourself for an immediate start in your chosen career.

APPRENTICESHIPS (LEVELS 2-4)

Gain qualifications while you earn.

These personalised development programmes offer a work-based route to a skills occupation with on-the-job training. These include Intermediate, Advanced and Higher Apprenticeships. **See page 31.**



QUALIFICATIONS & PROGRESSION ROUTES



STUDENT JOURNEY AT NORTHAMPTON COLLEGE

Studying at Northampton College provides great opportunities to progress through the levels of qualifications into Higher Education, Apprenticeships and employment.

ENTRY CRITERIA GUIDE

Below you can see a guide to the progression routes available. Some courses require higher grades than indicated below or additional evidence of your suitability such as a portfolio or audition. This is specified in the entry requirements for each course on our website.

QUALIFICATION LEVEL	TYPICAL ENTRY REQUIREMENTS
ENTRY AND FOUNDATION	GCSEs - MAINLY 2 - 1 (F - G) GRADES. SATISFACTORY SCHOOL REFERENCE ¹
LEVEL 1	FOUR GCSEs AT GRADE 2 (E) OR ABOVE
LEVEL 2	FOUR GCSEs AT GRADE 3 (D) OR ABOVE
LEVEL 3	FOUR GCSEs AT GRADE 9-4 (A* - C) FOR BTEC COURSES OR EQUIVALENT, ACCESS TO HE COURSES HAVE INDIVIDUAL ENTRY REQUIREMENTS.
LEVEL 4/5	A LEVEL 3 QUALIFICATION SUCH AS: A LEVELS, BTEC LEVEL 3, ACCESS TO HE, ADVANCED APPRENTICESHIP

- Equivalent qualifications will be considered.
- In exceptional circumstances, applications which do not meet the formal entry criteria may be considered on an individual basis.
- For certain courses, more specific entry criteria may apply.

¹ All applicants will be invited for interview (this might be telephone)

- 1 ADVICE & GUIDANCE**
Contact us via Live Chat on our website or call 0300 123 2344 if you'd like some course or careers advice
- 2 CHOOSE YOUR COURSE**
- 3 SUBMIT YOUR APPLICATION ONLINE**
You can access the online application form by clicking on the Apply Now button on our website
- 4 INTERVIEW**
(This may be by telephone)
- 5 JOINING THE COLLEGE**
Induction
English and maths initial assessment
- 6 TRANSPORT**
Student Support team
- 7 WELFARE**
Student Support team
- 8 ADDITIONAL SUPPORT**
Specialists and Learning Support team
- 9 LIBRARY**
Guidance and support to secure appropriate resources
- 10 STUDY PROGRAMME OR APPRENTICESHIP**
Academic Guidance - subject tutors
Personal Tutors - career planning and university entrance
- 11 FEEDBACK**
Quality Manager
- 12 HAVING YOUR SAY**
Students' Union & course reps
- 13 EXAMS, ACHIEVEMENTS & AWARDS**
- 14 YOUR DESTINATION**
Qualifications achieved



APPRENTICESHIPS

EARN WHILE YOU LEARN AND GAIN VALUABLE QUALIFICATIONS AT THE SAME TIME.

As an apprentice you will be in employment and benefit from a combination of study with practical training in the workplace.

You will also:

- Work alongside experienced staff
- Gain job specific skills, knowledge and behaviours
- Earn a wage and get holiday pay
- Study towards valuable qualifications

Apprenticeships take one to four years to complete. They are an increasingly popular choice for students who want to start their careers and develop their skills in the workplace. On an Apprenticeship you will learn practical skills at work, gain the expert knowledge you need to excel and develop the professional behaviours that employers value.

AS AN APPRENTICE YOU WILL ALSO IMPROVE YOUR EMPLOYABILITY SKILLS INCLUDING COMMUNICATION, TEAM WORKING, CREATIVE THINKING AND TIME-MANAGEMENT.

Northampton College works in partnership with hundreds of local employers to offer our students Apprenticeships in many areas so there is an exciting range of options to choose from.

We have a dedicated team on hand to support you every step of the way and can help with finding a job, writing your CV and preparing for interviews.

Apprenticeships are available in a range of areas, such as:

- Brickwork
- Business Administration
- Carpentry and Joinery
- Customer Service
- Early Years
- Electrical Installation
- Engineering
- Fabrication and Welding
- Footwear Manufacturing
- Hairdressing and Barbering
- Human Resources
- Motor Vehicle - Light Vehicle, Heavy Vehicle and Paint Refinishing
- Painting and Decorating
- Plumbing
- Property Maintenance
- Team Leading and Management

These Apprenticeship areas may be subject to change.



APPRENTICE PROFILES



STACIE MOLONEY HAIRDRESSING

“Changing careers to get into hairdressing is one of the best decisions I’ve ever made. I was working for the police, planning duties for firearms officers, but was signed off sick with anxiety and depression. I realised I needed to be doing something around people where I could make them happy.

“I’ve learnt so much and my teachers have been a massive help. I’m dyslexic as well but they broke everything down for me and let me go at my own pace. I got my maths GCSE and the team at Paul Watts in Kettering have allowed me to be creative and pushed me to see what I can do.

“I’d like to widen my knowledge further and learn more about bridal hair, barbering and hair extensions. Longer term, I’d love to own a salon one day – that would be the dream.”



RYAN BETTS ELECTRICAL INSTALLATION

“When I left school I didn’t really know what I wanted to do. A family member of mine is an electrician and suggested that I give it a go. I got a job at Tingdene Homes which included Apprenticeship study at Northampton College. I had a few jobs before I joined the course which helped me gain a basic understanding, but enrolling as an apprentice electrician expanded my skills and knowledge so quickly.

“I attend college one day a week and received a site visit once every six weeks. It’s great to have someone come out and visit you at work and the communication from the College is excellent. I also love how my work is split between practical sessions and classroom work as I find this way of working really suits me.

“It’s been very rewarding to take what I’ve learnt at college and apply it to my everyday job. I would recommend an Apprenticeship to others as a great alternative to a full-time course.”



LOUIS SEFTON

HNC MUSIC PRODUCTION

“I always wanted to work in music, so when we had a careers adviser at school they recommended the music courses at Northampton College.

“I started with the Level 3 Music Technology course which was phenomenal. The teachers were brilliant and explained things in class so well, it really gave me the confidence to get out there and do my own thing. I’m on the autistic spectrum so I was given additional support which took a lot of the burden off me, and really helped.

“I feel as though I’ve accomplished a lot and I have progressed on to an HNC in Music Production. I’ve made good friends and everyone on the course has common interests in music. It’s a great environment to be in. You learn from fellow students and benefit from the industry experience of the teachers. They have been there and done it themselves which is excellent. The facilities on the music course, such as the studios and The Underground performing space, are absolutely amazing. I’d highly recommend the course.”

HIGHER EDUCATION

WHY STUDY AT NORTHAMPTON COLLEGE?

We have excellent facilities and teaching resources and our teaching staff have expert knowledge in the technical and professional disciplines they teach.

Study options are flexible so you will be able to manage your time to take account of family and work commitments. You will study in small groups with one-to-one support that will help you develop independent learning skills.

If you live nearby, you don't have to travel away from Northamptonshire. Our course fees are very competitive compared with the cost of going straight to university.

You can benefit from:

- Range of excellent facilities and resources
- Award-winning library and extensive IT equipment
- Industry-trained staff
- Individual and small group support
- Advice and guidance
- Careers advice.

For more information on individual courses and entry requirements, visit our website northamptoncollege.ac.uk



YOU COULD JOIN A TWO-YEAR HIGHER NATIONAL PROGRAMME AT NORTHAMPTON COLLEGE THAT WILL COST LESS THAN GOING STRAIGHT TO UNIVERSITY.

HIGHER NATIONALS (HNC/HNDs)

We offer a growing number of HNCs which are equivalent to the first year of an honours degree. Like HNDs, they also provide specialist knowledge and skills based experience. The HNC is the first year of a Higher National qualification and is offered on a full-time and part-time basis. This allows you to work in your chosen industry whilst gaining a qualification.

HNDs are technical and skills-based and designed for specific types of jobs. They are the equivalent to the first two years of an honours degree and are designed to help you progress into employment.

When you join a two-year Higher National programme at Northampton College you will achieve an HND after the second year of study.

In many cases, you can top up to convert your HND into a degree with a further year of study. In three years, you can achieve two qualifications, an HND and a degree for less than the cost of going straight to university.

If you are planning to start a full-time or part-time higher education course at a university or college, you may be able to apply for a student loan from the beginning of the calendar year in which your course starts.

For more information, go to slc.co.uk

Recent HND graduates have gone on to achieve first and upper second class honours in their top-up degrees and are building exciting careers in their chosen profession.

You will study at our Booth Lane campus in Northampton and can take advantage of our state-of-the-art facilities and resources, industry trained staff, careers advice and Students' Union membership.

The Teaching Excellence Framework was introduced to measure higher education providers in terms of quality of experience for students. Northampton College has been recognised with a 'Silver' award for the quality of its higher education teaching, putting it above many leading universities in the rankings.

You can apply online via our website.

For more information, visit;
northamptoncollege.ac.uk/higher-education

We offer:

HND App Development	/	BL
HNC/D Business, Finance and Marketing	/	BL
HNC/D Cybersecurity	/	BL
HNC/D Dance	/	BL
HNC/D Digital Film Production	/	BL
HNC/D Digital Journalism	/	BL
HNC/D Engineering	/	BL
HNC/D Games Design	/	BL
HNC Music Performance	/	BL
HND Music Production*	/	BL
HNC Music Technology	/	BL
HNC/D Photography	/	BL
HNC/D Performing Arts Acting	/	BL
HND Session Musician**	/	BL
Foundation Diploma Art and Design	/	BL
Professional Diploma in Creative Enterprise	/	BL

*In order to enrol on this course you must first complete the HNC Music Technology course.

**In order to enrol on this course you must first complete the HNC Music Performance course.

**WE OFFER A GROWING
NUMBER OF HNCs WHICH ARE
EQUIVALENT TO THE FIRST YEAR
OF AN HONOURS DEGREE.**



ART, DESIGN, FASHION & PHOTOGRAPHY

LEVEL 1

Art and Design BL, DAV

LEVEL 2

Art and Design (General) BL, DAV

Art and Design (Illustration and Graphics) BL

Art and Design (Photography) BL

Fashion and Textiles BL

LEVEL 3 - CREATIVE PRACTICE: ART AND DESIGN

Art and Design (Spatial and Graphic Design) BL

Art and Design (General) BL, DAV

Art and Design (Illustration and Graphics) BL

Fashion and Clothing BL

Photography BL

LEVEL 3+

Foundation Diploma Art and Design BL

LEVEL 4/5

HNC/D Photography BL

Professional Diploma in Creative Enterprise BL

Looking for Theatrical Make-up?
See page 51.

ual:

KEY

BL – Booth Lane
DAV – Daventry



These creative programmes are perfect if you want to pursue a career in art and design, photography or fashion design.

A wide range of courses are available, from Level 1 right up to Level 5. If you have already studied art and design at school then you may be able to start on one of our Level 2 programmes immediately. If you have little or no experience you will need to start at Level 1.

- ▶ The creative industry is the fastest growing part of the UK economy, accounting for 1 in 11 jobs in the UK
- ▶ Because of the importance of individual creativity, skills and talent, it is estimated that over 85% of creative jobs are at low or no risk of automation
- ▶ Over 202,000 people are employed in the creative industries sector in the East Midlands.

Career pathways in this area include:

- ▶ Architect
- ▶ Art Therapist
- ▶ Artist/Illustrator
- ▶ Fashion Designer
- ▶ Graphic Designer
- ▶ Interior Designer
- ▶ Photographer

IMPORTANT

If you are coming for an interview for an art, design, fashion or photography course, please bring a portfolio of work that shows your creativity and the skills you have already developed. For remote interviews you will need to prepare a digital portfolio.

This could include GCSE coursework or pieces you have created in your own time. This will help us advise you on the best course for you.

For more information on individual courses and entry requirements, visit our website northamptoncollege.ac.uk

BUSINESS



If you have a head for business and would like the opportunity to work across a huge range of different organisations, then we have a programme to suit you.

Our business qualifications could give you a real understanding of the world of business and provide the perfect stepping stone for further study and careers in enterprise, management and accountancy.

- ▶ 53% of businesses in Northamptonshire are actively looking to recruit
- ▶ Small businesses account for 99.3% of all private sector businesses in the UK
- ▶ Northampton is amongst the top three cities for the number of business start-ups.

Career pathways in this area include:

- ▶ Accountant
- ▶ Business analyst
- ▶ Market researcher
- ▶ Area sales manager
- ▶ Marketing executive
- ▶ Financial administrator

For more information on individual courses and entry requirements, visit our website northamptoncollege.ac.uk

LEVEL 1

Business BL, DAV

LEVEL 2

Business BL, DAV

LEVEL 3

Business BL, DAV

LEVEL 4/5

HNC/D Business, Finance and Marketing BL

KEY

BL – Booth Lane
DAV – Daventry

SIMRAN JAWANDA

BUSINESS

"I wanted more independence, so I left school after my GCSEs and studied a Level 3 Business course at Northampton College.

"The teachers were genuinely keen to help me understand fully what they were teaching me and they are committed to helping you succeed. Others I know who went onto Sixth Form did not get this level of support.

"I went on to study a degree in accounting and finance at the University of Leicester and then completed a master's degree in finance. I can honestly say my time at college gave me a head start. It gave me a strong foundation to build on and an advantage over my peers who, unlike me, had no knowledge of law and accounting – subjects I had covered on my course.

"I now work as a junior finance partner at the Northampton base of Mitie, an intelligence-led security business, managing the costs of the whole division and I wouldn't hesitate to recommend Northampton College to anyone passionate about their future."



▼ [Click here for further course information](#)

COMPUTING & IT



Join this exciting, fast-moving world and sign up for one of our courses in **Software Development, Systems Support or Digital and Cyber Technology.**

Specialist resources include dedicated networks, interactive whiteboards and data projectors, discreet labs for networking, as well as for PC building and maintenance.

You will join our Digital Academy with its cutting-edge facilities and training from digital experts and local employers from the creative and digital sector immediately.

- ▶ Demand for high level skills in IT is set to grow
- ▶ There has been a sharp rise in e-commerce sales by businesses with 10 employees or more, from £484 billion to £560 billion in 2018

▶ 'Digital Northampton' is a collaboration between local authorities and businesses designed to support digital innovation in and around Northampton

▶ The UK is home to experts and pioneers in Artificial Intelligence (AI), Augmented Reality (AR), Virtual Reality (VR), the Internet of Things (IoT) and Robotics.

Career pathways in this area include:

- ▶ Web designer
- ▶ App developer
- ▶ IT support technician
- ▶ Big data architect
- ▶ Online fraud investigator
- ▶ Virtual reality software technician

LEVEL 1

IT BL

LEVEL 2

IT (Software Development) BL

IT (Software Development and Coding) DAV

IT (Computer Networking and Systems Support) BL

LEVEL 3

IT (Digital and Cyber Technologies) BL, DAV

IT (Networking and Emerging Digital Technologies) BL

LEVEL 4/5

HND App Development BL

HNC/D Cybersecurity BL

KEY

BL – Booth Lane
DAV – Daventry



For more information on individual courses and entry requirements, visit our website northamptoncollege.ac.uk

CONSTRUCTION & THE BUILT ENVIRONMENT

LEVEL 1

Brickwork and Hard Landscaping	BL
Carpentry, Joinery and Theatre/Film Set Production	BL, DAV
Construction Multi-skills	BL, DAV
Electrical Installations	BL
Painting, Decorating and Interior Design	BL
Plumbing and Heating	BL, DAV

LEVEL 2

Brickwork and Hard Landscaping	BL
Carpentry, Joinery and Theatre/Film Set Production	BL, DAV
Electrical Engineering	BL
Electrical Installations	BL
Painting, Decorating and Interior Design	BL
Plumbing and Heating	BL, DAV

LEVEL 3

Brickwork and Hard Landscaping	BL
Carpentry, Joinery and Theatre/Film Set Production	BL, DAV
Construction and the Built Environment (Building Services Engineering)	BL
Construction and the Built Environment (Civil Engineering)	BL
Electrical Installations (Building and Structures)	BL
Painting, Decorating and Interior Design	BL
Plumbing and Heating	BL

LEVEL 4/5

HNC/D Building Services Engineering	BL
-------------------------------------	----

KEY

BL – Booth Lane
DAV – Daventry



The construction industry offers huge scope for professional, technical and practical careers in a range of specialist areas.

Construction companies can be large house-builders or smaller contractors that supply electrics, lighting, services, power, air-conditioning, plumbing, heating and gas. As well as building and construction projects, there is plenty of work in the repair and maintenance of existing structures.

As well as skilled trades learned through Apprenticeships or full time Study Programmes, you can access pathways to higher level qualifications that may lead to careers in civil engineering and built environment project management.

Our courses enable you to develop a combination of different skills so that you can equip yourself to be flexible in today's dynamic employment market. Many students in this area progress on to Apprenticeships or higher education.

- ▶ The construction sector will grow by 2.5% every year for the next five years
- ▶ The global construction market is forecast to grow by over 70% by 2025
- ▶ 3 million jobs are based in construction; 10% of total UK employment
- ▶ There is high demand in Northamptonshire for skilled workers in renewable technologies.

Career pathways in this area include:

- ▶ Bricklayer
- ▶ Carpenter
- ▶ Electrician
- ▶ Painter and decorator
- ▶ Plumber
- ▶ Construction site manager
- ▶ Civil engineer
- ▶ Building services manager
- ▶ Quantity surveyor



MARK BRADSHAW

CONSTRUCTION

Mark was inspired to teach by his own experience of an influential teacher during his time in education.

"I'll never forget who has had a huge impact on me. That's what I want to do, make that difference to my own students.

"I love the little victories, when you see that you are really helping a student and changing a life.

"It's amazing to see students progress from studying a full-time course to gaining employment in the construction industry. We currently have former students working for companies such as Taylor Wimpey, Engie and Goodfellow Builders."

#ProudToTeach

COURSES FOR ADULT STUDENTS

LEVEL 1

Progression to Work and Further Studies LM

LEVEL 2

Beauty Therapy LM, DAV

Connect to Employment and Further Learning (Health Studies) BL

Hairdressing LM, DAV

Media Make-up LM

LEVEL 3

Beauty and Spa Therapy LM, DAV

Hairdressing LM, DAV

Theatrical Make-up LM

ACCESS TO HIGHER EDUCATION

Health Professionals BL, DAV

Humanities and Social Science BL

Science BL

KEY

BL – Booth Lane
LM – Lower Mounts
DAV – Daventry



Northampton College welcomes adults who have been out of education for some time.

Whether you didn't get along with education in school and want to try something new, or if your career has taken you in one direction but you're keen for a change, our courses could offer you the perfect route to a new career.

We offer various Access to Higher Education pathways as well as courses to help you work towards achieving an Access qualification. The course you join will depend on your starting point and area of interest. A lack of qualifications is no barrier and our guidance team will be happy to discuss your options.



ACCESS TO HIGHER EDUCATION

Access to HE courses are designed for people who want to go to university but who left school without the necessary qualifications. This course is for people who have spent some time away from education, and have the time and motivation to undertake a substantial amount of home study as well as attending classes.

If you're not yet ready to start an Access course, we might recommend that you begin your studies with our Level 1 or 2 courses (Progression to Work and Further Study, or Connect to Employment and Further Learning).

THE SKILLS CENTRE NC



Free Maths, English and IT* courses for adults at the Skills Centre NC. We offer part-time courses to anyone over the age of 18, whether you have decided to take on a new challenge, wish to return to education after a break or hope to further your career.

WHY SHOULD I STUDY AT THE SKILLS CENTRE NC?

- Study part time in a relaxed and friendly environment
- Join at any time throughout the year
- Improve your job prospects with a nationally recognised qualification
- Get advice and support from our qualified tutors

MATHS AND ENGLISH

Refresh your maths and English skills and work towards a recognised qualification by attending a weekly class, in the daytime or evening. At the end of your course you should be able to:

- | Maths | English |
|--|-----------------------------|
| • Manage your household budget | • Write letters and emails |
| • Get back into employment | • Complete job applications |
| • Get promoted at work | • Get back into employment |
| • Measure accurately for DIY projects. | • Get promoted at work. |

Whatever your ability we will find the right course for you.

IT

Whether you're a beginner or an experienced user, you can develop your IT skills further at The Skills Centre NC. Part-time courses are an excellent way to gain qualifications around a busy home life or job and will enable you to impress current or future employers with your advanced abilities when using Microsoft Office. You will be required to attend a minimum of four hours per week and can drop in to the Centre during opening hours.

*Conditions may apply

WHERE DO I START?

If you are interested in our courses, you will need to book an advice session so we can assess your current skill level and requirements. We take in to account your current knowledge of IT, what you would like to achieve and your level of ability in spoken and written English.

To book an appointment for an advice session please call 0300 123 2344 or visit www.northamptoncollege.ac.uk

ENGINEERING AND MANUFACTURING

LEVEL 2

Mechanical Engineering (Machining) BL

LEVEL 3

Electrical/Electronic Engineering BL

Mechanical Engineering BL

LEVEL 4/5

HNC/D Engineering BL

KEY

BL – Booth Lane



This is a diverse and dynamic sector where job roles require excellent problem-solving skills and ingenuity.

Engineering is behind everything from your smartphone to your computer to the design of driverless vehicles, and uses cutting-edge technology to solve some of the world's biggest challenges. Engineering uses maths and science (especially physics) to improve the way we live. Engineers bring new inventions to life, improve transport, tackle cybersecurity and help the environment. Our students go on to work in a variety of sectors such as high performance engineering, manufacturing and renewable energy.

- ▶ Northamptonshire is home to many high performance technology companies including more than 200 working in the motorsport sector

- ▶ In the South East Midlands, we have some world-leading manufacturers of food, drink, vehicles and components, while in Northamptonshire a hub of businesses produce some of the highest quality footwear in the UK
- ▶ Huge growth is expected in wind and wave power, energy and waste management, bio energy and plug-in electrical vehicles
- ▶ Starting salaries for engineering and technology graduates are around 20% higher than the average graduate starting salary.

Career pathways in this area include:

- ▶ Mechanical engineer
- ▶ Engineering technician
- ▶ Electronics engineer

For more information on individual courses and entry requirements, visit our website northamptoncollege.ac.uk



THE NUMBER OF WOMEN IN THE ENGINEERING WORKFORCE IS RAPIDLY RISING

ENGLISH FOR SPEAKERS OF OTHER LANGUAGES (ESOL)



If you are living in the UK and English is not your first language, then this programme is designed to help you progress into further study or employment.

Our full-time ESOL courses are designed to improve your fluency and accuracy in English speaking, listening, reading and writing skills.

It's never too late to join us - we also offer a short course in ESOL with a start in the Spring.

Students in this area progress on to many other courses including:

- ▶ Art and Design
- ▶ Business
- ▶ Childcare
- ▶ Computing and IT
- ▶ Construction
- ▶ Engineering
- ▶ Health and Social Care
- ▶ Media
- ▶ Performing Arts
- ▶ Public Services
- ▶ Science
- ▶ Travel

For more information on individual courses and entry requirements, visit our website northamptoncollege.ac.uk

PRE-ENTRY

English for Speakers of other Languages BL

ENTRY LEVEL 1

English for Speakers of other Languages BL

ENTRY LEVEL 2

English for Speakers of other Languages BL

ENTRY LEVEL 3

English for Speakers of other Languages BL

LEVEL 1

English for Speakers of other Languages BL

KEY

BL – Booth Lane

FOUNDATION PROGRAMMES

FOUNDATION PROGRAMMES

Construction Multi-skills	BL, DAV
Foundation Focus*	BL, DAV
Foundation Link*	BL, DAV
Foundation Engage (In partnership with Northampton Saints)*	BL
Introduction to Hospitality and Culinary Skills	BL
Introduction to Motor Vehicle and Vehicle Technologies	BL
Working with Children	BL

*These programmes have a broad focus to provide you with the help and support you need to find your next step.



If your GCSEs haven't gone as well as you hoped, or if you're not currently in education, employment or training, our Foundation Programmes will give you the key skills and qualifications you need to get back on track.

We offer a wide range of programmes designed to support your move into careers or training in everything from business to engineering.

Whatever your skills or interests, you're sure to find a programme to suit you, and our friendly team will help you decide on the best course of action.

When you're ready, you'll also be able to take part in enterprise activities to help the local community and you'll get the opportunity to take part in work experience that we will arrange through our contacts with local employers.

KEY

BL – Booth Lane
DAV – Daventry

For more information on individual courses and entry requirements, visit our website northamptoncollege.ac.uk

GAMES DESIGN



Do you enjoy developing computer games from scratch or have an interest in the exciting industry of computer games development? Our Games Design course could be for you.

Our new Digital Academy due to open in September 2021 will provide cutting-edge facilities and training from digital experts and local employers from the creative and digital sector. These courses will enable you to improve both your technical and creative skills.

Being able to design, write and engineer video games is a skill that very few have, despite the size of the industry. This course will equip you with the skills you need to succeed in the digital world and pursue a career in Games Design, Animation or Software Development.

Our new eSports course provides a unique opportunity to learn about the business side of eSports. You will create business plans to build team events, create online communities and promote your events

through digital marketing. Our exciting new AR/VR course will give you the skills to create designs and virtual environments enabling you to be at the forefront of the latest in technological developments.

- ▶ Jobs in the creative industry are highly resistant to automation, with over 85% of workers in the UK at low or no risk
- ▶ The creative industries could be worth £128.4 billion to the UK economy by 2025 and help to create up to a million jobs by 2030
- ▶ Occupations set to grow in importance include creative and digital roles.

Career pathways in this area include:

- ▶ Games designer
- ▶ Software developer
- ▶ eSports social media executive
- ▶ Competitive gaming manager
- ▶ Games tester

LEVEL 2

Games Design BL

LEVEL 3

Digital Animation BL

Esports BL

Games Design BL, DAV

Augmented Reality and Virtual Reality (AR/VR) BL

LEVEL 4

HNC/D Games Design BL

KEY

BL – Booth Lane
DAV – Daventry

ANDY LOVERIDGE

GAMES DESIGN

Meet Andy Loveridge, a former Northampton College student himself, who is now course leader for Games Design and Animation. Andy was nominated for FE Teacher of the year 2019 in The Teaching Awards and has a real passion for teaching students about the digital world.

"I absolutely love teaching. I had a wonderful experience studying at the College before progressing on to a career in the industry and that's something that has always had a profound impact on me.

"It's very rewarding to pass the knowledge and skills that I learnt at college on to my students.

"I encourage my students to work independently and have confidence in their abilities. Games Design is a very competitive industry and I think that it's vital to provide students with the key skills they need to succeed in their chosen career."

#ProudToTeach



▼ [Click here](#) for further course information

HAIRDRESSING, BEAUTY AND ASSOCIATED THERAPIES



Working in the hairdressing and beauty therapy sector is varied, people-focused and fun.

We offer a wide range of courses and qualifications, so whether your main interest lies in hairdressing, make-up or beauty therapy, you'll find a programme of study to suit you.

- ▶ Work as a stylist or therapist in a salon, hotel, cruise ship or health spa
- ▶ Develop creative skills for working in the theatre, film or TV industries
- ▶ Set up your own business or become a salon manager.

Career pathways in this area include:

- ▶ Hairdressing and beauty salon manager
- ▶ Hairdresser
- ▶ Beauty therapist
- ▶ Make-up artist

LEVEL 1

Beauty Therapy	LM
Hairdressing	LM
Hairdressing and Beauty Therapy	DAV

LEVEL 2

Beauty Therapy	LM, DAV
Hairdressing	LM, DAV
Hair and Media Make-up	LM

LEVEL 3

Beauty and Spa Therapy	LM, DAV
Hairdressing	LM, DAV
Theatrical Make-up	LM

KEY

LM – Lower Mounts
DAV – Daventry



For more information on individual courses and entry requirements, visit our website northamptoncollege.ac.uk

HEALTHCARE & CHILDCARE

LEVEL 1

Childcare	BL
Health and Social Care	BL

LEVEL 2

Childcare	BL, DAV
Health and Social Care	BL, DAV

LEVEL 3

Childcare and Education	BL, DAV
Health and Social Care	BL, DAV

LEVEL 4

Health and Social Care	BL, DAV
------------------------	---------



Whether you want to care for children or adults we have a good track record of student achievement.

Our experienced staff work to the very highest standards, with skills in both healthcare and childcare.

- ▶ The adult social care workforce is growing. The number of adult social care jobs has increased by 21% (275,000 jobs) since 2009
- ▶ The estimated number of adult social care jobs in Northamptonshire is 22,500
- ▶ If the workforce grows proportionally to the population aged 65 and over, the number of adult social care jobs in the East Midlands region will increase by 40%
- ▶ An ageing population means a shortage of recruits to help care for older people.

Career pathways in this area include:

- ▶ Nursery assistant
- ▶ Healthcare practitioner
- ▶ Social worker
- ▶ Classroom assistant
- ▶ Adult careworker

KEY

BL – Booth Lane
DAV – Daventry

For more information on individual courses and entry requirements, visit our website northamptoncollege.ac.uk



NARESH LANE

HEALTH AND SOCIAL CARE

Naresh worked for the NHS for almost 30 years, first as a registered nurse and then as a specialist community nurse before she began her career in teaching. She uses her experience to inspire her students and support them in gaining the knowledge and skills necessary to succeed in the Health and Social Care sector.

"I love to see my students leave college with improved self-esteem and new-found confidence in their abilities. That is the most rewarding aspect of teaching for me which is why I love my job."

#ProudToTeach

HOSPITALITY & CULINARY ARTS

LEVEL 1

Hospitality and Culinary Skills BL

LEVEL 2

Professional Patisserie and Bakery BL

Professional Chef BL

Events Management (Hospitality) BL

LEVEL 3

Advanced Professional Chef BL

Food Service Management BL



This is a dynamic industry, employing 1.5 million people across the UK in hotels, restaurants, hospitals, industrial food services, travel industries and the armed forces.

For those with drive and enthusiasm, this programme offers many exciting opportunities to develop and succeed – and the training starts right here.

Our student-led restaurant, open to the public during term time, combines contemporary fine dining with a relaxed brasserie style. Facilities include three production kitchens, pastry and larder training kitchens, a bakery and a front of house reception and bar.

- ▶ The UK food and drink sector employs 3.5 million people, including 1.7 million jobs in non-residential catering
- ▶ 140,000 new recruits are needed by 2024 to feed a growing population

- ▶ There are 778 food and drink businesses in the South East Midlands, with the manufacturing sector alone generating a turnover of £5.8bn.

Career pathways in this area include:

- ▶ Restaurant owner
- ▶ Wedding venue manager
- ▶ Head chef
- ▶ Front of house manager
- ▶ Sommelier

KEY

BL – Booth Lane

For more information on individual courses and entry requirements, visit our website northamptoncollege.ac.uk

MEDIA



Join the fast moving, action-packed world of the media and get a head start in this exciting career.

Media is all about communicating, so whether you're into blogging, the printed word or broadcast journalism this is the subject for you. We've got our own TV and radio studios on campus, as well as high spec film and camera equipment and computers loaded with industry standard software.

If you are a budding YouTuber, or want to become the next big influencer, you can learn how to produce social media content to promote you and your brand and discover new ways to increase likes and followers.

- ▶ Jobs in the creative industry are highly resistant to automation, with over 85% of workers in the UK at low or no risk

- ▶ The creative industries could be worth £128.4 billion to the UK economy by 2025 and help to create up to a million jobs by 2030

- ▶ Occupations set to grow in importance include creative and digital roles.

Career pathways in this area include:

- ▶ Assistant producer
- ▶ Radio presenter
- ▶ Camera operator
- ▶ Journalist
- ▶ Social media executive
- ▶ YouTuber

For more information on individual courses and entry requirements, visit our website northamptoncollege.ac.uk

LEVEL 1

Media BL

LEVEL 2

Creative and Digital Media BL, DAV

Social Media and Marketing BL

LEVEL 3

Creative Media (TV and Film) BL

Multimedia Journalism BL

Social Media and Marketing BL

LEVEL 4/5

HNC/D Digital Film Production BL

HNC/D Digital Journalism BL

KEY

BL – Booth Lane
DAV – Daventry

MOTOR VEHICLE ENGINEERING

ENTRY LEVEL 3

Introduction to Vehicle Industry and Vehicle Technologies BL

LEVEL 1

Transport Maintenance (Light Vehicle) BL, DAV

Transport Maintenance (Heavy Vehicle) BL

Vehicle Accident Repair (Paint Principles) BL

LEVEL 2

Construction Plant or Machine Maintenance (Construction) BL

Heavy Vehicle Maintenance and Repair Principles BL

Light Vehicle Maintenance and Repair Principles BL, DAV

Vehicle Accident Repair (Paint Principles) BL

Vehicle Fitting Principles BL, DAV

LEVEL 3

Construction Plant or Machine Maintenance (Construction) BL

Heavy Vehicle Maintenance and Repair Principles BL

Light Vehicle Maintenance and Repair Principles BL, DAV

Vehicle Accident Repair (Paint Principles) BL

KEY

BL – Booth Lane
DAV – Daventry



Our state-of-the-art tools, equipment and machinery will give you the chance to train in a highly innovative environment and prepare you for a future career in the motor vehicle industry.

The latest vehicle air-conditioning and vehicle systems diagnostic equipment will be at your disposal, plus a large spray booth for vehicle re-finishing and six additional training booths, while support is available from a range of vehicle manufacturers.

Sector jobs are varied and you could find yourself working in an independent garage or at a large car, truck or motorcycle dealership. You could be working on body repairs, in a parts factory or as a mobile specialist.

The automotive industry is a vital part of the UK economy accounting for more than £82 billion turnover and employing 186,000 people

It accounts for 12% of total UK export of goods

There are 34.7m cars on the UK's roads, with around 2.5m new cars registered every year.

Career pathways in this area include:

- ▶ Vehicle body builder and repairer
- ▶ Automotive technician
- ▶ Plant fitter
- ▶ Vehicle refinisher (paint)

For more information on individual courses and entry requirements, visit our website northamptoncollege.ac.uk

MUSIC & MUSIC TECHNOLOGY



Our vibrant and creative music offer provides our students with exciting opportunities to specialise in music performance, music technology and music production.

We work closely with local venues, record labels, promoters and media and have a host of specialist resources which include a digital recording studio, music technology suites, sound-proofed booths, record decks and performance rooms.

- ▶ The creative industries are one of the fastest growing parts of the UK economy
- ▶ Freelancers make up a significant portion of self-employed workers in the creative industries
- ▶ The UK music industry contributes £4.5bn to the economy every year and employs almost 150,000 people.

Career pathways in this area include:

- ▶ Musician
- ▶ Music producer
- ▶ Sound engineer
- ▶ Venue manager

For more information on individual courses and entry requirements, visit our website northamptoncollege.ac.uk

LEVEL 1

Music BL

LEVEL 2

Music Performance/Technology BL

LEVEL 3

Music Performance/Technology BL

LEVEL 4/5

HNC Music Performance BL

HNC Music Technology BL

HND Music Production* BL

HND Session Musician** BL

*In order to enrol on this course you must first complete the HNC MusicTechnology course.

**In order to enrol on this course you must first complete the HNC Music Performance course.

ual:

KEY

BL – Booth Lane

PERFORMING ARTS

LEVEL 1

Performing Arts BL

LEVEL 2

Acting BL

Dance BL

Musical Theatre BL

Technical Theatre BL

LEVEL 3

Acting BL

Dance BL

Musical Theatre BL

Technical Theatre BL

LEVEL 4/5

HNC/D Dance BL

HNC/D Musical Theatre BL

HNC/D Performing Arts Acting BL

HNC/D Technical Theatre BL



Do you dream of a career on the stage? Or are you fascinated by being backstage and putting together the technical elements that underpin a great performance? Either way, our diverse collection of performing arts courses will inspire you.

You'll have the chance to perform in college and at a variety of external venues, and perhaps even tour a production around the county's schools. And when you're in college you'll enjoy top-of-the-range facilities, including studio theatres with full lighting rigs, sound equipment and lighting control boxes, dance studios with fully sprung floors and rehearsal studios.

- ▶ The creative industry is the fastest growing part of the UK economy, accounting for 1 in 11 jobs in the UK
- ▶ The creative sector is growing, with a high demand for people with the right skills, qualifications, training and attitudes

- ▶ More than 283,000 work in the music, performance and visual arts sector in the UK
- ▶ UK theatres attracted more than 34m visitors in 2018, generating ticket revenues of £1.28bn from 62,945 performances.

Career pathways in this area include:

- ▶ Actor
- ▶ Dancer
- ▶ Singer
- ▶ Choreographer
- ▶ Director

For more information on individual courses and entry requirements, visit our website northamptoncollege.ac.uk

ual:

KEY

BL – Booth Lane

PUBLIC SERVICES



Allow us to fire up your enthusiasm for a career in the armed forces, police force, ambulance service, prison service or the fire service.

You'll need plenty of self-discipline and motivation to meet the tough challenges of these careers. Our programme provides you with a solid foundation so you're well prepared with the skills and ability to take the next step into such demanding job roles. If you've got what it takes, we can help you with our links to organisations including Northamptonshire Police, Northamptonshire Fire & Rescue, Royal Navy, Royal Marine Commandos, Royal Air Force and the Army.

- ▶ There are 5.4 million people employed in the UK public sector, including 1.68 million people working in the NHS
- ▶ There are 122,395 police officers in the 43 police forces in England and Wales

- ▶ 192,130 people work in the UK armed forces. This is 6.6% less than the target number and new recruits are needed.

Career pathways in this area include:

- ▶ Police officer
- ▶ Fire and rescue officer
- ▶ Army officer
- ▶ Prison officer
- ▶ Paramedic

For more information on individual courses and entry requirements, visit our website northamptoncollege.ac.uk

LEVEL 1

Public Services BL, DAV

LEVEL 2

Public Services BL, DAV

LEVEL 3

Public Services BL, DAV

KEY

BL – Booth Lane
DAV – Daventry

SCIENCE

LEVEL 2

Applied Science BL

LEVEL 3

Applied Science BL

If you're looking for courses in forensics go to page 61.

KEY

BL – Booth Lane
DAV – Daventry



Whether you're fascinated by the natural world around you or the creativity and innovation that goes into new inventions – from mobile phones to breakthroughs in medicine – science is sure to spark your imagination.

Studying science can take you on the road to becoming a biochemist or a geneticist, an engineer, laboratory technician, forensic investigator, pharmacy technician, quality controller or a teacher. There'll be a strong practical element whichever route you take, as well as the opportunities for fieldwork and even residential visits.

You can progress from our Science programmes directly into employment or go on to university. Whichever route you take, you'll benefit from exploring and debating a range of significant scientific theories.

- ▶ The green economy is a priority sector for the UK meaning extra support for 'green collar' jobs
- ▶ There is a shortage of geologists, analytical chemists and energy managers
- ▶ The Life Sciences sector creates £70.3bn in annual turnover, with a total of 5,700 new jobs created across the industry in the past year.

Career pathways in this area include:

- ▶ Science and production technician
- ▶ Health professional
- ▶ Teacher
- ▶ Pharmacy technician
- ▶ Biochemist
- ▶ Laboratory technician

For more information on individual courses and entry requirements, visit our website northamptoncollege.ac.uk

SOCIAL SCIENCE



Social sciences courses will help you gain a critical understanding of human behaviour and society.

They're the perfect foundation for a wide variety of degree courses and careers, since you'll gain highly transferable skills in critical thinking and analysis.

Level 2 Social Science can be studied as a stepping stone to the Level 3 Forensic and Criminal Investigation Course or to other Level 3 courses. It is suitable for students who have an interest in sociology, psychology and politics and who want to find out more. During this one year course you will study units such as Social psychology, Introduction to social policy, economic policy and British politics and the sociology of health.

If you are interested in how science can help solve crimes, then our Forensic and Criminal Investigation course could be for you. It is intended for those who aim to progress to higher education to study forensic science, criminology or psychology and ultimately go on to employment.

- ▶ Employment in the Forensic Science sector has grown at an unprecedented rate over the last ten years, due largely to advances in technology such as the National DNA Database, and an increased reliance on forensic techniques by police forces for solving serious and violent crimes
- ▶ The justice sector employs around 600,000 employees in the UK across a range of organisations operating with different remits
- ▶ There are now more than 100 forensic science courses on offer at universities.

Career pathways in this area include:

- ▶ Forensic criminologist
- ▶ Forensic science technician
- ▶ Crime scene or fire investigator
- ▶ Forensic psychologist

LEVEL 2

Social Science BL, DAV

LEVEL 3

Forensic and Criminal Investigation BL, DAV

Social Science - Criminology, Law and Psychology BL, DAV

KEY

BL – Booth Lane
DAV – Daventry

SPORT

LEVEL 1

Sport BL

LEVEL 2

Football and Education Programme BL

Sport BL

LEVEL 3

Football and Education Programme BL

Sport BL



Whichever sport you choose to study you will have access to our incredible choice of facilities, including our fitness centre, sports hall, playing fields, astro-turf and low ropes course. Whilst you are at college you will also have the opportunity to take part in sports, coach students and organise sporting events for your peers.

- ▶ The UK sports industry contributes £23.8bn to the economy and employs almost 1m people
- ▶ Popular careers include grounds staff, sports and leisure assistants, coaches, fitness instructors and professional athletes
- ▶ £7bn is spent on recreational and sports services every year, while there are more than 3,000 fitness facilities across the country
- ▶ Northampton College has close links with Virgin Active Health Club & Spa in Northampton.

Career pathways in this area include:

- ▶ Leisure and sports manager
- ▶ Sports coach
- ▶ Match official
- ▶ Physiotherapist
- ▶ Professional footballer



KEY

BL – Booth Lane

For more information on individual courses and entry requirements, visit our website northamptoncollege.ac.uk

SUPPORTED LEARNING



Our Supported Learning courses are specifically designed for students with special educational needs and disabilities and those who completed Supported Learning Link Courses in their final year of school.

Our highly experienced staff will create a programme of study specifically tailored to your needs and designed to give you the educational opportunities and challenges you need to fulfil your potential. You'll flourish in an environment that is both supportive and engaging and will help you get ready for your next step.

All of our courses are designed to help you develop your skills for adulthood, for employment, for independent living, and for building friendships and understanding the community as well as staying healthy. We'll agree which course is best for your future plans, whether you want to study further or move into the workplace, and help you understand what you need to do to get there.

Our Moving On programmes are an integral part of our provision. These courses enable autistic young people to gain the skills they need to progress onto their next step with our experience and support.

We also offer our students the opportunity to take part a series of fun activities alongside their course, including:

- ▶ Work experience
- ▶ Community projects
- ▶ Performing Arts projects
- ▶ Furniture restoration
- ▶ NCS (National Citizenship Service)
- ▶ Café projects
- ▶ Garden and conservation projects

TRANSITION COURSES

Stepping In Pathway 1 (Accessing College & Education) BL, DAV

Stepping In Pathway 2 (Moving on Part 1) BL

SKILLS DEVELOPMENT COURSES

Stepping Up Pathway 1 (Personal Progress at Entry 1) BL, DAV

Stepping Up Pathway 2 (Life and Living Skills at Entry 2) BL, DAV

PREPARATION FOR FURTHER STUDY & EMPLOYMENT

Stepping Out Pathway 1 (Next Steps at Entry 3) BL, DAV

Stepping Out Pathway 2 (Moving on Part 2) BL, DAV

Stepping Out Pathway 3 Supported Learning Link (Level 1) BL, DAV

Stepping Out Pathway 4 Supported Learning Link Elevate and Advance (Level 1/Level 2) BL, DAV

PATHWAY TO EMPLOYMENT

Supported Internships BL, DAV

KEY

BL – Booth Lane
DAV – Daventry

TRAVEL & TOURISM

LEVEL 1

Introduction to the Travel Industry BL

LEVEL 2

Travel and Tourism BL

LEVEL 3

Travel and Sustainable Tourism BL



Travel and tourism is a career that can take you to far-flung destinations and introduce you to people from all over the world. Find out what it is like to be an air cabin crew member or a holiday representative and learn about exotic holiday destinations.

Students can also study professional and technical travel qualifications including Resort Representative, Aviation Operations on the Ground, Passenger Shipping Agents, Sustainable and Responsible Tourism and Air Cabin Crew Certificate.

Level 3 courses provide UCAS points for progression to university.

- ▶ Britain is forecast to have a tourism industry worth over £257 billion by 2025 - supporting approximately 11% of total jobs in the UK

- ▶ The 37.9 million overseas visitors who came to the UK in 2018 spent £22.9 billion

Career pathways in this area include:

- ▶ Travel agent
- ▶ Cabin crew member
- ▶ Events planner
- ▶ Conference and exhibition manager
- ▶ Travel blogger

KEY

BL – Booth Lane

For more information on individual courses and entry requirements, visit our website northamptoncollege.ac.uk

WELDING & FABRICATION



Our state-of-the-art welding plants and fabrication machinery will allow you to train to industry-recognised disciplines of manufacturing.

You will learn the practical elements of fabrication and welding covering three main disciplines: Manual Metal Arc (MMA), Metal Active Gas-shielded (MAGS) and Tungsten Inert Gas-shielded (TIG). You will work on a combination of light and heavy-duty materials with CNC machines that meet today's industrial practices.

This equipment along with enthusiastic and experienced teachers will enable you to learn different techniques in welding and fabrication from design and concept work, to fabrication and inspection using SolidWorks and AutoCAD.

The college is proud to hold the status of CSWTO as a weld training organisation and all of our teaching staff are industry approved trainers.

- ▶ To achieve its wider ambitions for growth, the UK Metals Industry will need to attract some 2,300 graduates a year and 9,200 apprentices and technicians

- ▶ 85 per cent of UK welders are employed full time and two per cent work part-time. The remaining 13 per cent are self-employed.

Career pathways in this area include:

- ▶ Welder
- ▶ Sports car fabricator
- ▶ Heavy lorry and trailer fabricator
- ▶ Computer aided design (CAD)
- ▶ Computer numerical controls (CNC) programmer

LEVEL 2

Fabrication and Welding BL

LEVEL 3

Fabrication and Welding BL



KEY

BL – Booth Lane

For more information on individual courses and entry requirements, visit our website northamptoncollege.ac.uk

EMPLOYMENT & YOUR CAREER

**WHEN YOU JOIN THE COLLEGE,
YOU ARE ALREADY TAKING
THE FIRST STEP TOWARDS
YOUR WORKING LIFE AND
FUTURE CAREER.**

Our programmes are designed with your future in mind so we'll help you get focused on what you want to do after you leave college and how to get there.

FURTHER STUDY – THE NEXT LEVEL

Once you've got a good idea of your starting point, you may need to work towards the next level of qualification in your chosen area.

Our programmes go right up to Level 5 and many of our students progress through the levels before they move on into higher education or employment. We will advise you on how you can benefit from progressing to the next level in your studies.



HANNAH BILLING

LEVEL 3 PUBLIC SERVICES

"Joining the Cadets at 14 ignited a desire in me to have a career in public services. I left school at 16 and researched the best way to achieve a career in the police force. I came across the Level 3 Public Services course at Northampton College and decided to enrol. The physical side was great and I particularly enjoyed running, keep fit and the assault courses as well as the lessons themselves.

"Because I left school without A Levels I had to get enough UCAS points to be able to go on to study a BA Honours in Policing at The University of Northampton and thanks to the fantastic set up at Northampton College, I blew it out of the water.

"I'm now a Police Constable with Northamptonshire Police. I would advise anyone out there wanting to pursue a career in public services to go for it. You will gain so much from the course, communication skills, team building and life skills which you can apply to any job. For me, the journey won't stop here."



OUR FUTURES TEAM

The Futures team has information on next steps and you will have access to a careers and higher education library, an integral part of all our campuses.

Futures can also help you apply to university, write your UCAS personal statement, understand student finance and perfect your interview skills. They are in touch with employers and universities and have access to local labour market information.

We can help with:

- Career progression routes
- Advice on qualifications
- Apprenticeships
- University applications
- CV writing skills

To book an appointment with a member of the Futures Team please email futures@northamptoncollege.ac.uk.

OUR FUTURES TEAM PROVIDES ADVICE AND GUIDANCE TO HELP YOU MAKE THE RIGHT CHOICE FOR YOUR FUTURE.

HOW TO APPLY

A STEP BY STEP GUIDE

Firstly, check the course information on our website to see if you have, or are predicted to achieve, the entry requirement to join the course.

Approximate Timescales

Online – Same day

1 day

Within 1 week

July/August

On or after GCSE results day

End of August/early September

Starting your studies



Complete the Application form online.

We will contact you via email with your offer, updates and joining instructions. Please state your email address clearly on the application form.

Application received by Northampton College.

We send you an acknowledgement (by email).

You will be made a conditional offer.

Once we have reviewed your application, we will make you an offer or provide alternative advice.

To assess your level of ability, you may also be required to complete a task or participate in a workshop. This could be during July, August or September, so please wait to be invited.

During July and August we will send you lots of information, including kit lists and virtual induction videos.

We will send you an email on GCSE results day.

You will need to confirm that you have met the entry requirements for your course and that you would like to join us in September.

If you don't achieve the grades you need, we will offer you a place on a course on a lower level, which will prepare you to join your first choice the following year.

You will be asked to complete an online enrolment and upload a photograph for your student ID card.

You will be given a start date once you have confirmed your place.